

City of Newburyport



DPS SEWER DIVISION

WHAT HAPPENS WHEN BABY WIPES, SANITARY WIPES, AND
MATERIAL OTHER THAN TOILET PAPER ARE FLUSHED
DOWN THE TOILET?



Graf Road Lift Station clogged with rags/wipes – Photo on left taken in July - pumps cleaned out completely. Photo on right taken in October of the same year, clogged AGAIN!

It does not matter what time of year or the time lapse of cleaning the pumps, if rags/wipes are flushed, pumps will clog and backups will happen



WHAT HAPPENS WHEN FATS, OILS AND GREASE (FOG) ARE DISPOSED INTO THE DRAIN/SEWER SYSTEM?



What is FOG?

Answer: Fats, oils and grease from food preparation, residential and food manufacturing sites

Where does it come from?

Answer: Meat fats, lard, cooking oil, shortening, butter, margarine, food scraps, baking goods, sauces, and dairy products

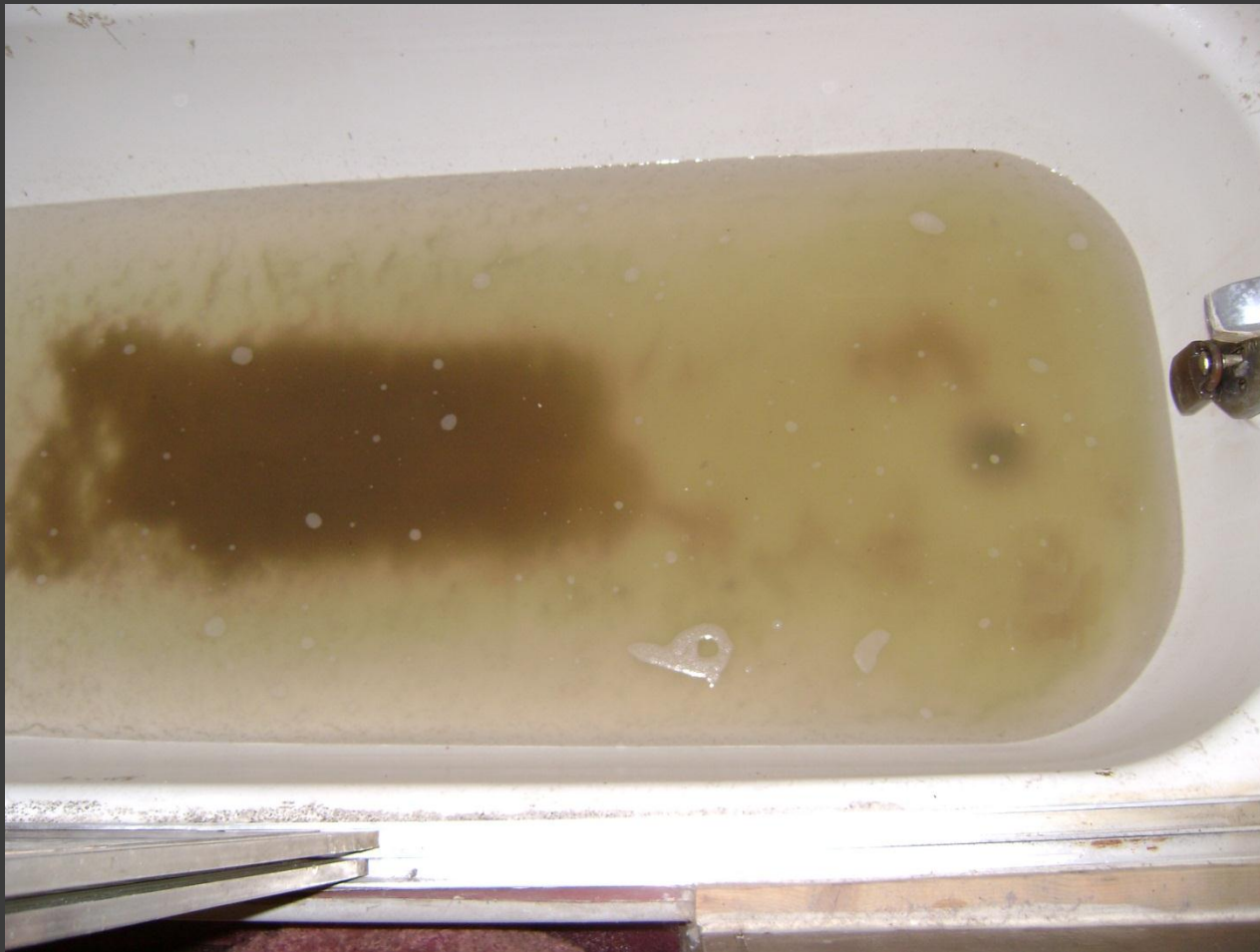
FOG is a major cause of sewer backup's in the city! Grease of this magnitude is caused by disposing house hold cooking material/food scraps and other oils down the drain. The grease leaves the property liquefied then coagulates down stream, leading to CLOGGED manhole in picture to the left. Same manhole on right after cleanup with Vactor.



Scotland Rd lift station, grease enters the wet well picture left, it forms and hardens around the equipment, pumps, transducers, etc. picture right, also rags/wipes combined with grease will cause failure at the stations. This station pumps 60,000-80,000 GPD.



SEWER BACK UP! This photo was taken at a resident's home. The bath tub in the home was filled with sewage due to City sewer main blocked with grease and rags/wipes.



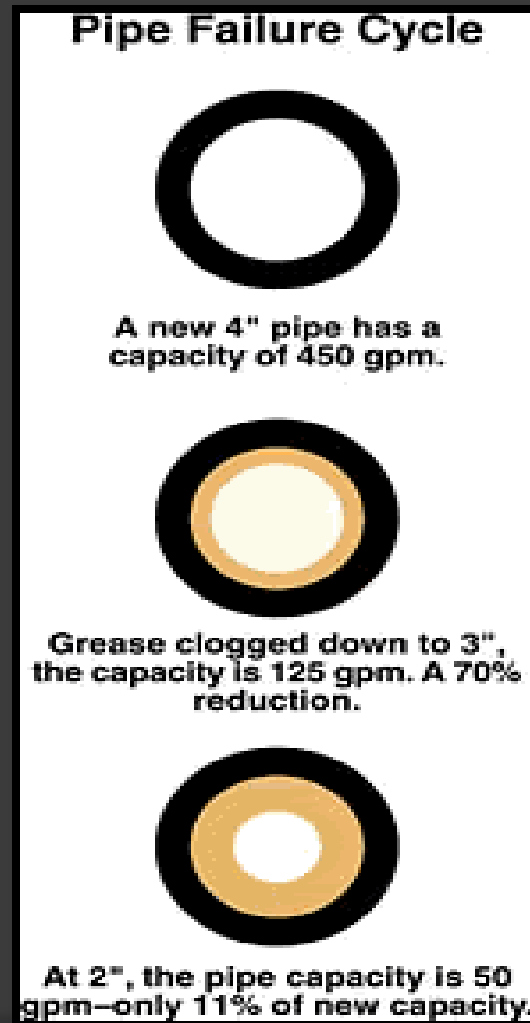
Damage caused in a resident's home by a sewer blockage. This backup was due to wipes/rags and grease in the City sewer main.



Sanitary Sewer Overflow (SSO). SSO's occur when sewer mains are clogged preventing flow through the pipe. Water will find a path of least resistance either in a home or outside environment.



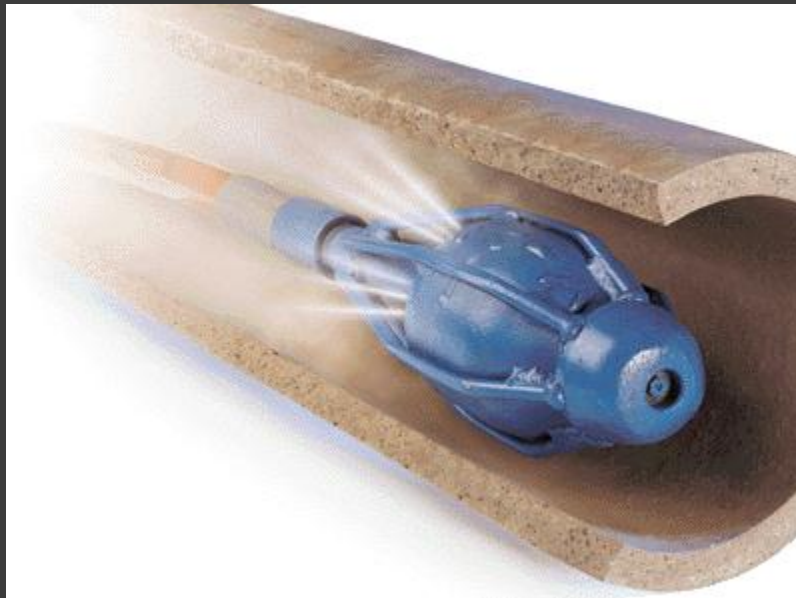
Effects of grease in sewer pipe. As you can see, the pipe reduces in size from 450gpm to 50gpm, when pipe is 50% blocked with grease.



The Sewer Division Vactor truck assists cleaning the City's sewer mains. It is used like a vacuum, sucking debris and grease out of lift station wet wells (picture left), and sewer mains.



Example of the high pressure Vactor nozzle cleaning the inside of a sewer main.



Below are a few ideas on what can you do to help alleviate these messy, costly backups?

- Throw used wipes in the trash. **"Disposable"** does not mean **"Flushable."** Cleaning wipes, baby wipes, paper towels, etc. do not dissolve. Instead, they get stuck in sewer pipes and sewer pumping equipment, causing costly sewer backups and sanitary overflows as well as equipment failure.
- Dispose of cleaning or baby wipes, latex gloves, paper towels, and personal hygiene products in the bathroom wastebasket!!
- Never pour grease or other house hold oils down sink or toilets!
- Dispose of cooled cooking fats, oils and grease into a waxed food container such as a milk carton or coffee container with a lid and dispose of it in the garbage.
- Minimize the use of your garbage disposal.
- Use baskets or strainers in sinks to catch food scraps.